



ARRIVAL GUIDE

FOR INTERNATIONAL STUDENTS

University of Utah Asia Campus



THE UNIVERSITY OF UTAH ASIA CAMPUS

CONTENTS

Peer Support

[Visa Information](#)

[Immigration and Alien Resident Card Reminders](#)

[Health Insurance](#)

[Healthcare](#)

[Money Matters](#)

[Housing and Meals](#)

[Communication, WIFI, and Cell Phones](#)

[Arrival and Campus Location](#)

[Local Grocery Shopping](#)

[Transportation in Korea](#)

[Mail](#)

[Technology and Appliances](#)

[Culture Matters](#)

[Helpful Services for Foreigners](#)

[Personal Safety](#)

[Drugs and Alcohol](#)

[Emergency Contact Information](#)

[UAC Contact Information](#)

[For other helpful information about Korea, click here to read
the 2019 Guidebook for Living in Korea](#)

WELCOME TO THE UAC

Congratulations on your decision to join the UAC family! We understand moving to a new country can be overwhelming so we're here to help! This guide covers important steps and information for adjusting to life in Songdo, but don't hesitate to contact the UAC's International Programs Coordinator for specific questions or concerns.

UAC STAFF CONTACT: ANNA YACOVONE (anna.yacovone@utah.edu)



Peer Support

Surviving and thriving often requires building strong social networks. The **International Student Diplomat** program is designed to support you and your acculturation to Korea.

Before arrival, we'll ask you via email for your [KAKAO ID](#) and add you to a shared student chat so you can meet other UAC students and also meet our Diplomats. They're a great resource for questions and support.



Spring '21 Int'l Student Diplomats

VISA INFORMATION

UAC STAFF CONTACT: JUNGA SEO (junga.seo@utah.edu)

HOW TO APPLY FOR A D-2 VISA STEPS:

1. PAY \$1,000 ENROLLMENT DEPOSIT
2. REQUEST CERTIFICATE OF ADMISSION:



1. After paying the enrollment deposit, submit the following to Jung A Seo, UAC Immigration, VISA, and Hiring Specialist (junga.seo@utah.edu)
 - Scanned copy of your passport biographic page
 - Umail and Unid
 - Major
 - Scholarship and Financial Aid Information
 - How long you are planning to study at the University of Utah Asia Campus Example: Fall 2018 semester only or Fall 2018 – Fall 2021
 - Name of the last institution you graduated from
 - Mailing address
 - Phone Number

Allow 5-7 business days for Certification of Admission processing.

3. AFTER RECEIVING CERTIFICATE OF ADMISSION, APPLY FOR D-2 STUDENT VISA
 1. **Find Korean Consulate Office** in your area and find out visa application process and interview schedule
 2. Bring required documents. Check the consulate for updated information, but this may include:
 - Completed visa Application Form
 - Passport
 - 1 photo
 - \$45 processing fee (rates may change; check local Korean Consulate)
 - ORIGINAL Certificate of Admission (issued by UAC)
 - Copy of Business Registration Certificate (will be sent with you with Certificate of Admission)
 - Copy of document indicating the final level of education
 - Original copy of document proving your financial ability to support yourself (one-year tuition fee and the living expenses for a year)

SPECIAL NOTES:

- A Family Relation Certificate is required when submitting a parent's bank statement
- The head of Korean diplomatic missions abroad may request for additional documents if it is deemed necessary for visa evaluation.
- Depending on the country of citizenship, students may need to submit additional documents. Students from **CHINA, CUBA, SYRIA, MACEDONIA AND KOSOVO** need to apply for a visa issuance number. Please contact your local Korean Consulate for more complete information.

ALIEN REGISTRATION CARD – FOREIGNER REGISTRATION

- The Alien Registration Card (ARC) is similar to a social security card
- Most used form of identification in Korea
- Any foreigner staying for more than 90 days is required to obtain an Alien Registration Card

- **UAC staff will help students make ARC appointments during the International Student Orientation**
 - **The ARC application must be filed within 90 days of arrival into Korea.**
 - JungA will inform students via email what documents to bring to the ARC appointment. These may include:
 - Application
 - Passport
 - 1 color photo (3.5cm x 4.5cm)
 - Verification of Enrollment
 - 30,000 KRW (cash only; fee subject to change)
 - Copy of UAC Business Registration (provided by UAC staff)
 - Residence Confirmation Form (request this at the Housing Office)
- You must have an appointment to visit the Immigration Office in your region (Incheon). Again, UAC staff will help you make an appointment for your ARC during the International Student Orientation.

INCHEON IMMIGRATION OFFICE BRANCH

Phone: +82-32-890-6305 or +82-32-890-6306

Address: Incheon-si Jung-gu Hangdong 7-ga 1-31 (Seohae-ro 213)

인천출입국외국인청

인천광역시 중구 서해대로 39 지변항동 7 가 1-31

NaverMap: <https://m.map.naver.com/search2/site.naver?code=11642361>

KakaoMap: <https://place.map.kakao.com/7893623>

Directions: Dongincheon Station (Seoul Subway Line 1), Exit 4. Walk out from Dongincheon underground shopping district, Exit 8.

Take Bus 12 or 24 at Dongincheon Station Bus Stop to the immigration office.

IMPORTANT IMMIGRATION AND ARC REMINDERS

ARC RENEWAL

Students must contact Jung A Seo to schedule an appointment to renew their ARC if the date is close to expiring. **LETTING YOUR ARC DATE EXPIRE PRIOR TO RENEWAL MAY INCUR EXPENSIVE FEES.**

LEAVE OF ABSENCE

International students who decide to take a Leave of Absence from the university must contact Jung A Seo. Depending on the length of time, students may be required to reapply for a D2 visa.

PROGRAM COMPLETION & LEAVING KOREA

After completing all course requirements at the Utah Asia Campus, the UAC is required to report students' program completion date to the Korean immigration office. Students on a D2 visa must then depart Korea within 30 days from the end date of the program (typically the last day of finals).

CHANGE OF ADDRESS

You have fifteen (15) days to report any change in address. Contact Jung A Seo on how.

WORKING IN KOREA

- A D-2 student visa will allow you to work in Korea, but there are limitations.
- Personal private tutoring that involves going to individual's home/café and receiving monetary compensation is strongly prohibited by immigration law.
- Examples of allowed activities:
 - Translation/interpretation, assistant clerk at restaurants, office assistant, Activities at English village or English camps as a sales clerk, a waiter/waitress or assistant staff, Tour guide assistant, sales assistant at a duty-free shop, etc.
- Undergraduate students may work 10 hours/week M-F and unlimited hours on the weekends.
- Graduate students may work up to 15 hours/week M-F and unlimited hours on the weekends.
- Change of Workplace: If you change employers, must report this to the local immigration office:
 - Reporting method: International students themselves must report by visiting an immigration(branch) office in person or filling an e-application within 15 days of the date of change.
- Extension for Period of Part-time Work
 - ✂ Restricted individuals:
 - If your latest semester's attendance rate is 70% or lower or GPA is C(2.0) or lower, you will be regarded as having a difficulty maintaining job and study at the same time.
 - If you fail to register detailed information of you part-time job conditions (workplace, working hours, etc) or if you haven't reported after changing workplace, you will not be allowed to extend the period of part-time work.
- You can work on-campus or obtain a work permit from the immigration office to work off-campus.
- Visit UAC Handshake for on-campus employment opportunities
 - Note: UAC students cannot work more than 15 hours per week on-campus or hold more than 3 on-campus jobs
 - On-campus employment is paid through tuition reduction scholarships

HEALTH INSURANCE

Contact Email: claimhelp@culturalinsurance.com

There are two types of insurance UAC international students may be enrolled in.

1. KOREAN NATIONAL HEALTH INSURANCE

- Per Korean law, international students on a D2 visa will be enrolled in the Korean National Health Insurance system.

WHEN YOU'LL BE ENROLLED:

- You'll be automatically enrolled by the Korean government after being issued your ARC.

COST:

- Average cost is 30-40,000 KRW per month for the 2021 year and 40-50,000 KRW per month for 2022

HOW YOU'LL PAY ENROLLMENT FEES:

- The National Health Insurance will send bills the mailing address listed on your ARC from the 10th of every month.
- Bills are due by the 25th of every month.
- **KNHI will only accept domestic banking. Therefore, international students on a D2 visa will need to have Korean bank account in order to pay their enrollment fees.** (See [Local Banking](#) section).
- **The immigration office will not extend your visa if the amount due is over 500,000 KRW**

HOW YOU'LL PAY FOR MEDICAL CARE

- When visiting a medical facility, you'll need to show your Arc to show proof of KHNI coverage.
- After completing your visit, you will pay-out-of-pocket for the medical costs.
- While Korean healthcare is comparatively affordable to other countries, **STUDENTS SHOULD HAVE AN ACCESSIBLE FORM OF PAYMENT (e.g., credit card with no foreign transaction fees)**

2. CULTURAL INSURANCE SERVICES INTERNATIONAL (CISI)

- Per UAC policy, UAC international students (who are defined as any student who designated on their admissions application any country other than the Republic of Korea for their citizenship) will be enrolled in the private, supplemental Cultural Insurance Services International (CISI) plan.

WHEN YOU'LL BE ENROLLED:

- Enrollment begins each calendar year.
- Fall entry students: students attending the UAC for the first time in the fall will be enrolled starting August 1.
- Students should check their SPAM folder in case their CISI confirmation email is sent there

COST:

- ~\$44 USD per month

HOW YOU'LL PAY ENROLLMENT FEES:

- Students will be charged the total amount to their CISI. The payment due date is the same as the student tuition due date.

HOW YOU'LL PAY FOR MEDICAL CARE:

- After paying out of pocket for a service, you can request reimbursement by completing a reimbursement form.
- Reimbursements can take up to 15 business days from the time they're submitted.
- ***Because students will have to pay-out-pocket for medical expenses, STUDENTS SHOULD HAVE AN ACCESSIBLE FORM OF PAYMENT (e.g., credit card with no foreign transaction fees)**

HEALTHCARE

PRE-ARRIVAL

Prescription Medication

- Students should consult with their primary care doctor about prescription medications, vitamins, and supplements needed that may be unavailable or illegal in Korea
- Certain prescriptions are prohibited in Korea, **therefore students must obtain proper documentation and approval and submit a written application to the Narcotics Control Division of the Korean Ministry of Food and Drug Safety (MFDS) before travel.** Please contact the MFDS for the application and procedure and up-to-date information:
 - +82-43-719-2813 | narcotics@korea.kr
 - Please review the following information with detailed instructions on bringing prescription medication into Korea:
 - ***Application and required documents should be submitted at least 10 days before entry date. Legal processing period is 10 business days.**
 - [Guideline for Bringing Prescription to Korea](#)
 - [Form1-Inbound Traveler's Permit Application](#)
 - [Form2-Narcotics bring in permit](#)
 - [Example\(Form1-Inbound Traveler's Permit Application\)](#)
 - [Example\(Form2-Narcotics bring in permit\)](#)
 - [FAQ](#)
- The Korean Customs Service at the Incheon Airport has authority over which medications will be allowed to be carried into Korea.
- General recommendations:
 - Investigate how to obtain the same or equivalent medications prior to your departure in case a replacement is needed due to loss, inadequate supply, or the need to resupply maintenance medications is ongoing.
 - To obtain medications, carry a written list of all medications taken, including commercial and generic names
 - If you are unsure whether the same or equivalent drug is available internationally, work with your healthcare provider (in your home country and locally in Korea) or pharmacist to select an alternative medication

- Generally, mailing or couriering any kind of medication from one country to another is illegal.
- For more information: <http://www.mfds.go.kr/eng/index.do>

Pro-tip: it's best practice to bring copies of your prescriptions when traveling or moving abroad

General Information

Students with recent mental healthcare diagnoses should carefully consult with their primary care doctor, as Korea offers limited mental healthcare support options in English (see below).

Women's healthcare:

- While widely available by prescription, oral contraception differs in dosage and brand in Korea. Female students may consider bringing their own prescription.
- **Emergency contraceptives are available only by prescription. Based on your level of comfortability, you may want to consider packing a back-up dosage.**
- Menstrual products: Various products may not be available in Korea, so female students should pack accordingly.
 - Diva cups are not widely available
 - Small size tampons (without paper/plastic applicators) are available, but ultra-absorbent are typically not widely available (locations: OliveYoung, Emart, Convenience Stores)

WHERE TO GO

1. Incheon Global Campus Health Clinic
 - a. Multi-Complex Building, 3068
 - b. Open 9-12, 1-5:30 Monday – Friday (closed on weekends and national holidays)
 - c. Can visit for general health consultations; can be referred to nearby clinics for various needs
2. HomePlus Clinic – English speaking services - 인천 연수구 송도국제대로 165 (우)21984 송도동 168-3
 - a. Located in basement of HomePlus building (in corner behind escalator going up)
 - b. For general medical concerns
 - c. Doctor onsite speaks English
 - d. Naver: <http://naver.me/F2v0naDH>
 - e. Kakao: <https://place.map.kakao.com/26893530>
3. Gachon International (GIL) Hospital - 인천 남동구 남동대로 774 번길 21 (우)21565 구월동 1198
 - a. For routine medical procedures or emergencies
 - i. [Click here for a list of departments](#)
 - b. Many doctors speak English, but can get translation service assistance
 - c. Naver: <http://naver.me/5s930U8m>
 - d. Kakao: <https://place.map.kakao.com/13517464>
 - e. To make appointment, email or visit: <http://foreigner.gilhospital.com/>
 - f. To request translation service, email: gihc@gilhospital.com
 1. Matthew, English 010-6272-9567
 2. Jessie, English, 010-2397-1108

3. Claudia, English and Mandarin, 010-3370-9069

4. Nasaret International Hospital - 인천 연수구 만우금로 98 (우)21972 동춘동 937-4

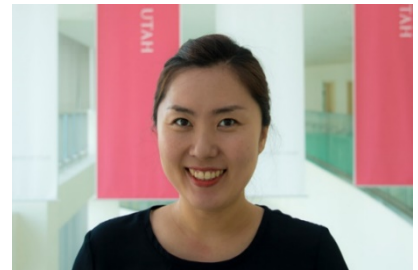
- a. Located across the bridge (about 10 minutes via taxi)
- b. To make an appointment, email nasaret971@naver.com
- c. <http://nasareteng.com/>
- d. Naver: <http://naver.me/GlqtfnQ1>
- e. Kakao: <https://place.map.kakao.com/8233512>

PAYMENT OPTIONS

1. Option 1:
 1. Visit any medical facility
 2. Pay out of pocket
 3. File a claim with CISI by filling out form and emailing it to CISI (claimhelp@mycisi.com)
2. Option 2:
 1. Visit Gil Hospital
 2. Pay out of pocket 10% of total cost (often helpful to have one of the translators assist you with this); the 10% is the final amount you'll pay (you'll not get a reimbursement after paying 10%)

MENTAL HEALTHCARE

- Mental Health Center (on campus)
 - Up to 12 free sessions with on-site mental health counselor Jan Lee (Jan.lee@utah.edu)
 - To make an appointment: <https://appointmentwithjan.as.me>
- **Prior to arrival, students should carefully consider and acknowledge that Korea offers limited mental healthcare support options in English. Students are strongly encouraged to consult with their primary doctor and discuss options before departure.**



MONEY MATTERS

Local Currency: Won (download XE app for currency conversions)

PRE-DEPARTURE

- Inform your home bank you will be in Korea so your accounts are not frozen while using your debit or credit cards abroad
- Consider obtaining a credit or debit card with no foreign transaction fees
- Most transactions in Korea are conducted with cards, but cash is also accepted
 - Visa, American Express, and MasterCard are widely accepted

UAC TUITION PAYMENT OPTIONS

- Because transferring money can incur expensive fees, the UAC is now partnered with Flywire.

- Flywire is a third-party service that provides international students with an easy and secure method of paying from overseas.
- To access this payment option please proceed to **the portal by clicking here**, enter the country where your overseas account is located and the amount you owe. Be sure to also select the University of Utah.
- You can also [view an instructional video here](#)
- For questions, you can [contact the Flywire team by clicking here](#).
- Tuition is usually due the second Friday of the semester. [Click here to see tuition payment deadlines](#).

LOCAL BANKING

Opening a bank account

- UAC students on a D2 visa will need to open a Korean bank account in order to pay for their Korean National Healthcare Insurance
- To open a bank account in Korea, will need to bring:
 - Passport
 - ARC
- The UAC will invite a KEB Hana rep to visit campus after new students have received their ARCs.
 - If students are not able to attend this visit, students will need to visit the KEB Hana Branch that's uptown (see here: <http://naver.me/5Wc67tkq>)
 - Students must inform the bank teller that they are with the Utah Asia Campus
 - Students are not required to bank with KEB Hana. If they do not take advantage of the KEB Hana rep visit, students will need to open an account independently.
- The closest branch is in the HoneStar Building (2nd floor behind Hyundai Premium outlet)
 - Naver: <http://naver.me/G2UQYODG>
 - Kakao: <https://place.map.kakao.com/9519856>
 - 인천 연수구 송도국제대로 157 (우)21984 송도동 168-2
- KEB Hana customer service line in English: #1544-3500
- Benefits:
 - Can use Korean-issued debit card to access public transportation services
 - A bank account is required for many local pre-paid phone plans
 - You can link you bank account from your home country to do online money transfers

Closing a bank account

- Students will need to close their bank accounts in person before their final departure from Korea
- Closing Korean bank accounts from overseas is not recommended, as the process can be difficult

Internet banking

- While convenient for online shopping, students should be aware that internet banking is very strict and you will be required to install several security programs on your computer to access your account

ATMS

Withdraw Cash

- Not all ATMs accept cards that are not issued in Korea

- May need to use a “Global ATM” (2nd floor of Honestar building behind Hyundai Premium outlet) | [Watch this Youtube video of the UAC off campus tour](#)
- If using a card issued outside Korea, will have to select “foreign” card on the ATM machine

Locations

- IBK ATM Outside Dorm Building B (blue box near the taxi stand)
- Global ATM on second floor of Honestar Building behind Hyundai Premium outlet

CULTURE NOTE

- When handing a debit/credit card or money to a cashier, be sure to use either two hands or one hand while the other hand holds your elbow: [CLICK HERE TO READ MORE ABOUT CASHIER TRANSACTION CULTURE](#)

HOUSING AND MEALS

UAC STAFF CONTACT: LAUREN POINDEXTER (Lauren.poindexter@utah.edu)

APPLICATION – MUST APPLY BEFORE ARRIVAL

- Students will be sent the housing link via email.

LODGING OPTIONS ON CAMPUS

- Single or double occupancy
- Furnishings: twin bed, desk, chair, wardrobe per occupant
- Each room includes private bathroom and shower
- [Click here for a virtual tour of the IGC campus.](#)
- [Click here to view Student Housing Dorm A](#)
- [Click here to view Student Housing B](#)

TB X-RAY RESULTS REQUIRED FOR CHECK IN

Students are required to provide a **negative TB xray result prior to checking into the IGC dorms**. Only x-ray results will be accepted.

It's recommend to receive your result prior to departure. In case you're not able to, students can visit one of these local clinics:

연세최선내과의원 / Yeonsei ChoiSun internal clinic

송도내과의원 / Songdo internal Clinic

송도속내과의원 / Songdo Sok internal Clinic

송도이이주내과의원 / Songo Lee-Leeju internal Clinic

MEALS AND COOKING OPTIONS

- Shared kitchen on own or adjacent floor
 - Cooking options per kitchen: 2 small burners, 1 microwave, a shared single refrigerator

- Cooking equipment is NOT provided
- IGC Cafeteria: ₩ 4 – 6,000 per meal
 - M-F: breakfast, lunch, & dinner
 - Saturday: light brunch
 - Sunday: closed
- Triple Street: Local mall across from campus
 - Variety of dining options
 - [See Local Grocery Shopping Options Below](#)

COMMUNICATION, WIFI, AND CELL PHONES

Country code: +82

KaKao Talk

- **Download KaKao Talk BEFORE departing for Korea (need working phone to confirm app installation)**
- Most common app used in Korea
- Used to communicate with UAC students
- Available on iPhone, Android, and BlackBerry
- Similar to WhatsApp or iMessage



Cell Phones

Having a Korean phone number has become an essential aspect of life in Korea. Students are highly recommended to purchase a Korean SIM, as their ability to navigate Korea will be difficult and more challenging.

Before Arrival:

- The UAC advises that international students purchase a Korean SIM card in order to utilize several services while in-country.
- **If students are required to quarantine, they must have a Korean SIM / phone number in order to complete their quarantine phone application daily check-ins (which ask for symptoms and temperature checking).**
 - Here is a website that has international delivery service options:
<https://www.trazy.com/experience/detail/korea-sim-card-international-shipping-service>
- Contact home-country phone carriers to make sure your cell phone is **unlocked**

Korean Phone Plans

If students need a more permanent, sustainable phone plan options, they can visit the **T-World store at Campus Town** to purchase a pre-paid or yearly contract plan.

인천 연수구 송도과학로 27 번길 55 롯데캐슬캠퍼스타운 상가동 101 호 (우)21982 송도동 149

- Naver: <http://naver.me/GKoWvqh3>
- Kakao: <https://place.map.kakao.com/340947727>
- About 20 minute walk from IGC
- Because a one-year or two-year contract plan requires your ARC + bank account, long term students are encouraged to purchase a pre-paid plan until they are able to sign up for a contract plan.
- Having access to data and having a Korean phone # will help ease your experience as you navigate Songdo and Korea

Miscellaneous Options

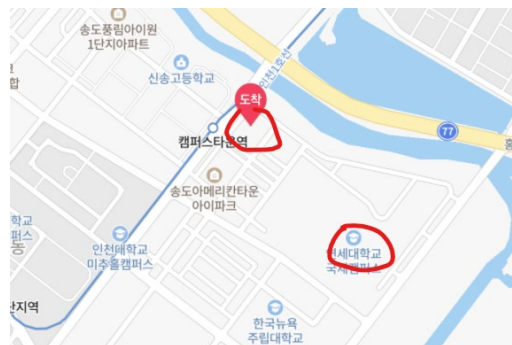
- Purchase Skype credit to be able to make calls in-country, but use WIFI for other needs (like Skype or WhatsApp, you can make calls to friends using KaKao with internet connection)

WIFI

- IGC has guest WIFI students can use around campus (password: 1234567890)
 - Students will need their uNIDs to create an IGC username and account. [Click here to create an IGC account.](#)
 - For questions or issues using Wifi, students can visit the IGC IT Center (Room #1015 Multicomplex building) or email itcenter@igc.or.kr
- Students who want faster WIFI in their dorm rooms can purchase a WIFI router to use in their room (can be purchased at Office Depot in basement of Triple Street)

ARRIVAL AND CAMPUS LOCATION

- Songdo (송도), Yeonsu-Gu (연수구), Incheon (인천)
- 90 minutes – 2-hour bus ride to Seoul (2 major bus stops direct to Hongdae or Gangnam)
- Within 10-minute walking distance of mall Triple Street (with variety of dining and shopping options)
- Within 15-minute walking distance of grocery store HomePlus



CAMPUS ADDRESS

인천광역시 연수구 송도문화로 119 인천글로벌캠퍼스

Utah Asia Campus
119-3 Songdo Moonhwa-Ro
Yeonsu-Gu Incheon, Korea, 21985

TRANSPORTATION FROM INCHEON AIRPORT

- Taxi: <https://youtu.be/dtv7uavqTic> (easiest if carrying multiple bags)
- Bus: <https://youtu.be/hr7baefdBqo>
- Subway: <https://youtu.be/UiLSLvjAW6s>

LOCAL GROCERY SHOPPING

Nearby stores located across street in Triple Street Mall and neighboring Songdo:

Store	Location	Description/Types of Carried Products
HomePlus	20-30 minutes walking distance (past Triple Street) 인천 연수구 송도국제대로 165 (우)21984	Household goods, appliances, groceries, food staples
Daiso	Triple Street basement (10 -15 minutes walking distance) 인천 연수구 송도과학로 16 번길 33-4 트리플스트리트 D 동 지하 1 층	High-quality clearance, Japanese brand store; cleaning products, household items, snacks, office supplies, etc.
Lotte Mart	40 minute walking distance; 8-10 minutes via car 인천 연수구 컨벤시아대로 177	High-end household goods, groceries, food staples (includes mini Daiso on 2 nd floor)
E-Mart (Yeonsu Branch)	12-15 minutes via car; three subway stops from Techno Park Station 인천 연수구 경원대로 184	High-end household goods, groceries, food staples (electronics store in basement)
Costco	40 minute walking distance; 10-15 minutes via car 인천 연수구 컨벤시아대로 230 번길 60	Large wholesale store for groceries and other goods. Membership is required for checkout (can use membership card from native country).
Halalco Food Mart	20 minutes via car; 1 hour via bus 인천광역시 연수구 옥련 1 동 능허대로 187	Halal supermarket options in Incheon

HELPFUL SHOPPING TIPS

1. Bring your own grocery bags
2. Many grocery store chains closed the 2nd and 4th Sunday of every month. Visit <http://ishomeplusopen.com/> to check
3. Check-out/cash register culture:
 - a. Have your payment method ready!
 - b. Customers bag their own groceries
 - c. It's common for the next customer to move close behind you as you pay for and bag your groceries.

TRANSPORTATION IN KOREA

APPS TO DOWNLOAD

- **NAVER MAPS** – Use this instead of Google Maps
- **KakaoTaxi**
 - Similar to Uber, Lyft, or Grab; lets you summon a taxi anywhere in Korea
 - Use *General Request* and select “Pay the Driver” so you can use your physical card to pay the driver (and not have to use a linked Korean bank account)
- **Kakao Maps**
 - Similar to Naver, but can be linked to your Kakao account. Will show walking, public transportation, and driving routes to anywhere in Korea. Available partially in English.
- **KakaoMetro**
 - Provides detailed information specifically about the subway systems of each city in Korea. Available in English.
- **Subway Korea**
 - Another convenient English app that provides schedule, route, and fare information for the entire Seoul subway system (including Incheon).
- **KakaoBus**
 - Limited English, but very helpful in figuring out bus schedules, routes, and stops. Service available in Seoul, Incheon and other areas in Korea.

T-MONEY CARD

- Pro-tip: Your student ID card can be used as a t-money card!
- Cheaper and easier to use than cash
- Can be used on transit system throughout country
- Can be purchased at local convenience stores (GS 25, 711, CU)
 - Techno Park station convenience store sells cards (must have cash)
- Can be refilled at subway stations or convenience stores (must use cash)
- To use, place card at sensors at entrances/exits of buses and subways after boarding and exiting buses and trains

TAXIS

- Can use Kakao Taxi to hail taxis and direct driver to specific locations
- Can use cash or credit card (many prefer card) or some accept T-money cards
- Note: many taxi drivers do not carry cash, so if you use a taxi and pay in cash, use smaller bills
- Available around campus; a taxi stand is located next to Building Dorm B
- Helpful to have addresses written in Korean
- Tipping is usually not customary
- Always buckle up!

BUSES

- Local lines
 - 91 - [View the 91 Bus Route on Naver Maps](#)

- Two major lines to Seoul
 - 9201 (located one block from campus, Yonsei University stop)
 - Stops at Gangnam Station within 90 minutes
 - [View the 9201 Bus Route on Naver Maps](#)
 - M6724 (located one block from campus, Yonsei University stop, opposite of 9201 stop)
 - Stops in Hongdae at the Hongik University Station
 - [View the M6724 Bus Route on Naver Maps](#)
- Easiest to use one of the apps above to map your route

METRO

- Fast, user-friendly
- Operates 5:30am – 12:00am every day
 - Due to covid-19, many lines close earlier between 10pm and midnight. Be sure to plan ahead
- Best to use apps mentioned above to navigate train schedules and best route options
- Closest stops to UAC:
 - Technopark (15/20-minute walk from campus; located in Hyundai Premium Outlet)
 - Campustown (1 stop away from Technopark; 20 minutes walking distance from campus)

INCHEON GLOBAL CAMPUS SHUTTLE

- Free service for students, faculty, and staff
- Routes extend to downtown Songdo
- [Click here to view the current schedule](#)

KOREA TRAIN EXPRESS (KTX)

Schedules, fares, and train information: [KoRail website](#).

Closest Locations

- Incheon International Airport and Gwangmyeong Station (about 25 minutes away by taxi)

BICYCLES

- Songdo is flat, so purchasing a bike is a cost-effective way to travel around Songdo (can find local shops by searching on your NAVER or KAKAO Maps app)
- Prices can range from 300,000 won to 1 million won. Secondhand options are available via many of the community Facebook groups.

MAIL

- Each student on campus is issued a mailbox with a number corresponding to your door number
- Small envelopes/parcels will be put into students' mailboxes
- Larger parcels will be held in the security offices in either Dorm A or Dorm B

Campus Address to Receive Mail (coming from outside Korea):

Room # _ _ _ _ Housing A (OR Housing B)
Incheon Global Campus

Songdo Munhwa-ro 119 Yeonsu-gu
21985 Incheon
South Korea

Campus Address to Receive Mail (coming from inside Korea, for example Coupang)

인천광역시 연수구 송도 문화로 119
인천글로벌캠퍼스 생활관 A 동 (or B 동) #____호
21985

LOCAL POST OFFICES

- Yonsei University Location
 - Located in the basement of the Yonsei University Library (type Yonsei University into Naver)
 - **Directions:** Descend the stairs once you find the library location; Take a left at the end of the stairs, then one right, and then the post office will be in the back corner towards the left.
 - Downtown Songdo Location
-

TECHNOLOGY & APPLIANCES

ELECTRICITY

- Standard voltage in Korea: 220 volts (and 60 Hertz, or cycles)
- Outlet/plugs: European-style with two round holes/plugs
- Advised to purchase high-voltage electronics (e.g., hair dryers) in Korea
- Laptops are often equipped to handle dual voltage and only require an outlet adapter (available at most retail stores)



COMPUTERS

- Not required, but advised for students to have a computer for academic use
- Students have access to 2 on-campus computer labs (5th floor in Utah building)
- MAC users: many authorized Apple re-sellers, but only one official Apple store in Seoul
 - Users will need to be able to run Windows based programs and Internet Explorer

PRINTING

- Available on fourth floor in printing center
- Can use debit/credit card (may not accept international cards)

UNIVERSITY OF UTAH SOFTWARE

- University of Utah students have access to FREE Adobe and Microsoft Software

- [Click here to download](#)
-

CULTURE MATTERS

- Adjusting to a new country is often about self-exploration and how your own cultural values and norms align with the new landscape you're living in.
- When trying to learn about another culture's norms, values, traditions, and customs, **consider yourself a cultural detective that makes observations**. As a detective, it's important to observe, explore and learn about the histories, politics, societies, religions, philosophies, and traditions of a particular region.

SUGGESTED RESOURCES ABOUT KOREA

- [2019 Introduction to the Republic of Korea Guidebook](#)
- [CIA World Factbook Korea](#)
- [List of Korean films about Korea](#)

Podcasts:

1. Soju Black
2. The Dark Side of Seoul
3. The Seoul Podcast
4. The Korea File

Non-Fiction:

1. *Confucius Meets Piaget: An Education Perspective on Ethnic Korean Children and Their Parents* by Jonathan Borden
2. *Modern Korea* by Andrew Salmon
3. *Korea: The Impossible Country – South Korea's Rise from the Ashes, Inside Story of an Economic, Political, and Cultural Phenomenon* by Daniel Tudor
4. *The Korean Mind: Understanding Contemporary Korean Culture* by Boye Lafayette De Mente
5. *Korea – Culture Smart!: The Essential Guide to Customs & Culture* by James Hoare
6. *Learning to Think Korea: A Guide to Living and Working in Korea* by Robert Kohls

Fiction:

1. Please Look After Mom by Shin Kyung-Sook
 2. The Vegetarian by Han Kang
 3. Pachinko by Min Jin Lee
-

HELPFUL SERVICES FOR FOREIGNERS

- Follow your country's embassy page/social media and register with your embassy's programs, if applicable (Example: US students should enroll in the State Department [Smart Traveler Enrollment Program](#))
- [Songdo Community Private Facebook Group](#)
 - Community to crowd source resources and information for expats

- [Expat Women in Korea Private Facebook Group](#)
 - Online community to crowd source resources and information for female expats
 - **English Translation Line by BBB Korea – 1588-5644** (nonprofit created to help with language translation)
 - **Tourism Help Line – 1330**
 - English language assistance or travel information
 - Can offer detailed transportation information, directions, translation help, and answer any questions
 - **Immigration Contact Center – 1345**
 - Services are available in 20 different languages.
 - **IFEZ Global Center**
 - Run by the Incheon Free Economic Zone Authority
 - Provides support services for foreign residents of Songdo.
 - Offer free Korean language classes and cultural activities.
 - Read more on [website](#)
 - **Visit Korea**
 - Comprehensive [website](#) with information about travel and popular destinations, events, transportation, shopping, travel, and Korean culture
 - **LGBTQ+ Resources:** Bit.ly/prideinkorea
-

PERSONAL SAFETY

South Korea ranks among the safest countries in the world and has an extremely low crime rate. While you can feel comfortable walking nearly anywhere in the country at nearly anytime of the day or night, it is still important to use common sense and maintain strict situational awareness at all times. Here are some general tips for safely spending time in any new country:

- Keep your personal belongings and valuables close and do not leave important items unattended. Theft is rare here, but does happen.
 - Let a friend know when you're going out and when you expect to return.
 - Avoid situations that involve too much alcohol consumption. Many of the crimes that occur in Korea are alcohol-related.
 - When visiting clubs, stay with your friends, and watch your beverage containers closely.
-

DRUGS AND ALCOHOL

The legal drinking age in Korea is 19, however, students are NOT permitted to have alcohol in dorms, even if 19.

Soju is a common alcoholic drink in Korea and is readily available. However, the alcohol content in soju can be quite strong. Even if you are of the legal drinking age in Korea, we recommend **being aware of your consumption and your own limits**. Always carry a taxi card with you if you are going off-campus.

Korean law is extremely strict when it comes to illegal drugs. Possession or use of marijuana or other drugs can result in jail time, whether or not you are a citizen of Korea. Neither the UAC nor the US embassy or any other embassy is able to intervene on your behalf if you are arrested for any crime while you are in Korea, so please be mindful of all local laws.

When visiting local clubs and bars, have a buddy go with you, and always keep an eye on your cups/liquid containers.

EMERGENCY CONTACT INFORMATION

We strongly recommend storing the following emergency telephone numbers in your mobile phone.

UAC emergency number: 010-6241-6003

RA-on-duty emergency number: 010-9547-6014

- 112 Crime (National Police Agency)
- 119 Fire, Emergency patients (National Emergency Management Agency)
- 1339 Emergency medical treatment/Hospital information
- 122 Marine emergency (National Maritime Police Agency)

Emergency service phone numbers offer their services in 12 different languages.

UAC CONTACTS

Anna Yacovone

Location:

Phone:

Email:

International Programs Coordinator

Utah 206

032-626-6005

anna.yacovone@utah.edu

Jung A Seo

Location:

Phone:

Email:

Immigration, VISA, and Hiring Specialist

Utah 858

032-626-6123

Junga.seo@utah.edu

Lauren Poindexter

Location:

Phone:

Email:

Program Coordinator, Residence Life and New Student Programs

U206

TBD

Lauren.poindexter@utah.edu

Peter Smith

Location:

Phone:

Email:

UAC International Admissions Counselor

Utah 201

032-626-6133

smith.pete@utah.edu

Jan Lee	Mental Health Therapist https://appointmentwithjan.as.me
Location:	MCB 3052
Phone:	032-626-6142
Email:	jan.lee@utah.edu
Louise Kim	UAC Financial Director
Location:	Utah 807
Phone:	032-626-6125
Email:	louise.kim@utah.edu
Heidi Kim	Undergraduate Student Academic Advisor
Location:	Utah 202
Phone:	032-626-6225
Email:	Heidi.kim@utah.edu
Alexis Choi	Undergraduate Student Academic Advisor
Location:	Utah Academic Advising Center
Phone:	032-626-6100
Email:	alexis.choi@utahe.edu
Khee Park	IT Assistant
Location:	Utah 852
Phone:	032-626-6121
Email:	Khee.park@utah.edu